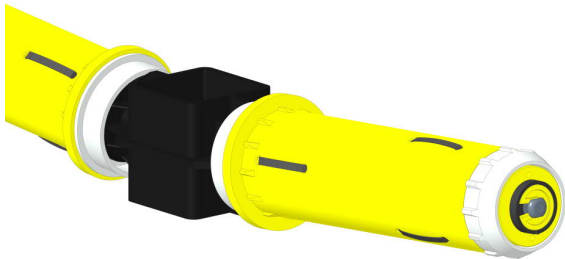
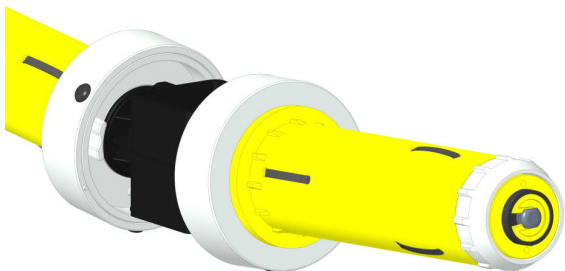


List of different unwinding positions



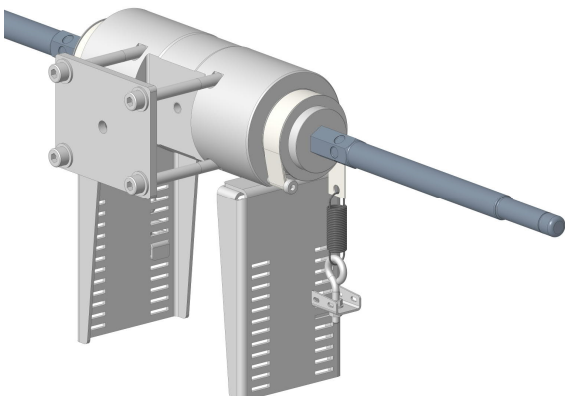
Mechanical unwinding position

- Unwinding speed: 1-20 m/min
- Thread tension: 100-500 cN
- Bobbin weight: max. 20 kg
- Regulation: mechanical, decentralized adjustable
- Suitable for almost all common bobbins



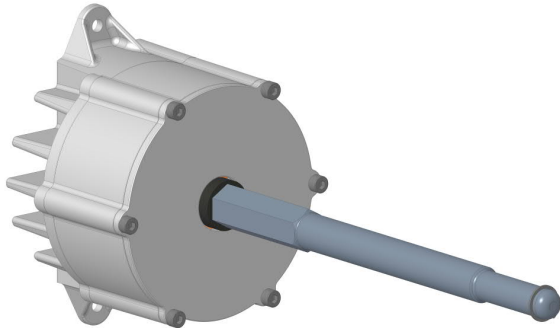
Reverse rotation adapter

- Unwinding speed: 1-20 m/min
- Thread tension: 100-500 cN
- Bobbin weight: max. 20 kg
- Regulation: mechanical, decentralized adjustable, reverse rotation function
- Suitable for almost all common bobbins



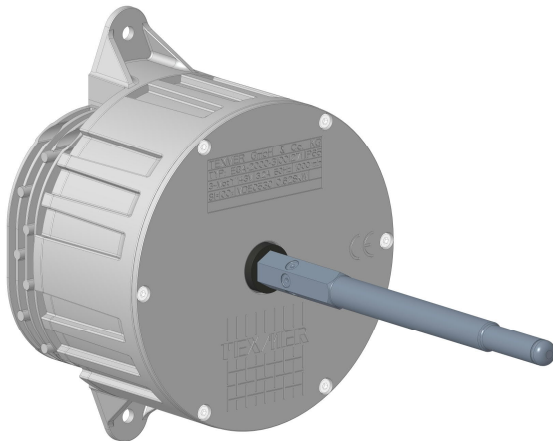
Strap brake unwinding position

- Unwinding speed: 1-100 m/min
- Thread tension: 50-450 cN
- Bobbin weight: max. 30 kg
- Regulation: mechanical, decentralized adjustable
- Suitable for almost all common bobbins



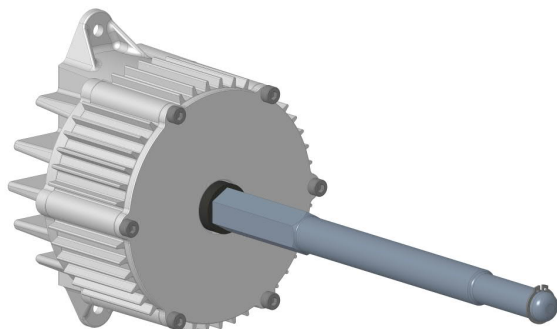
EGA600®

- Unwinding speed: 1-250 m/min
- Thread tension: 50-600 cN
- Bobbin weight: max. 20 kg
- Regulation: electronically, centrally adjustable, automatically readjusting
- Suitable for almost all common bobbins



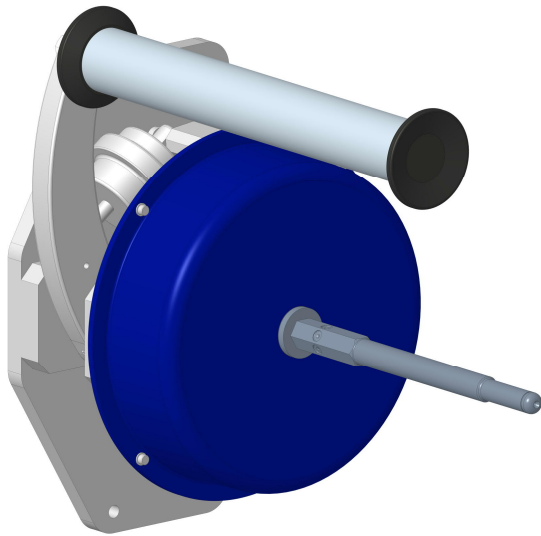
EGA2000®

- Unwinding speed: 1-250 m/min
- Thread tension: 200-2000 cN
- Bobbin weight: max. 40 kg
- Regulation: electronically, centrally adjustable, automatically readjusting
- Suitable for almost all common bobbins



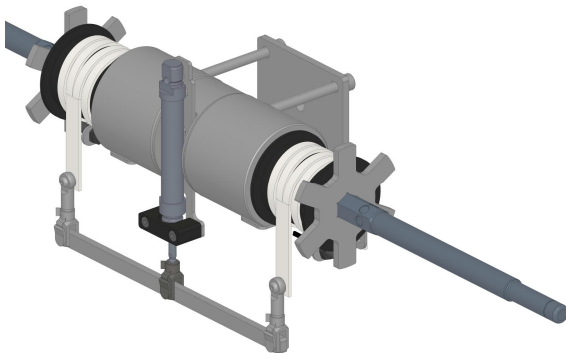
EEA®

- Unwinding speed: 40-350 m/min
- Thread tension: 100-1000 cN
- Bobbin weight: max. 20 kg
- Regulation: electronically, centrally adjustable
- Suitable for almost all common bobbins



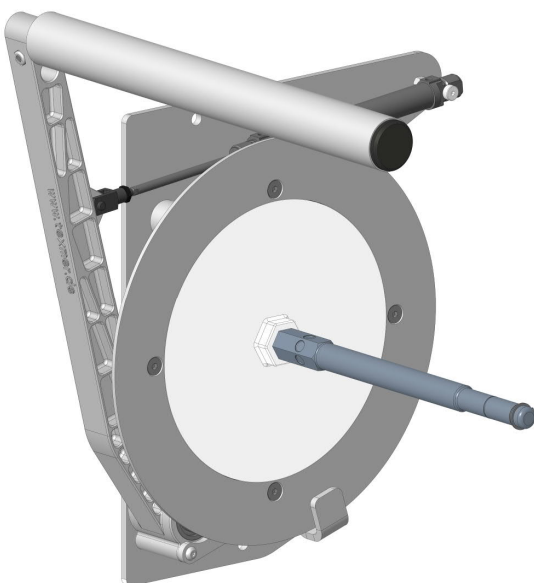
Eddy current brake

- Unwinding speed: 8-150 m/min
- Thread tension: 450-5000 cN
- Bobbin weight: max. 40 kg
- Regulation: pneumatically, centrally adjustable
- Suitable for almost all common bobbins



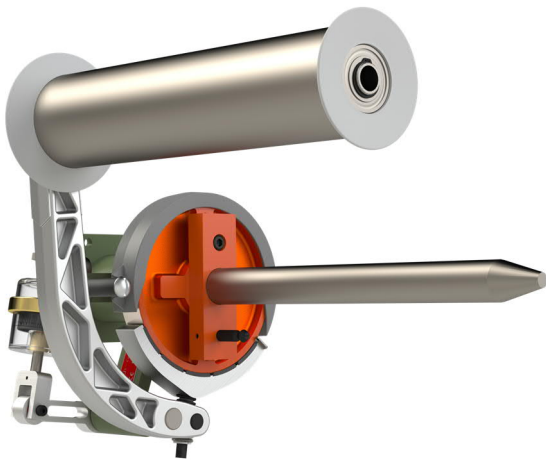
PMR unwinding position

- Unwinding speed: 20-180 m/min
- Thread tension: 200-600 cN
- Bobbin weight: max. 25 kg
- Regulation: pneumatically, centrally adjustable, automatically readjusting
- Suitable for almost all common bobbins



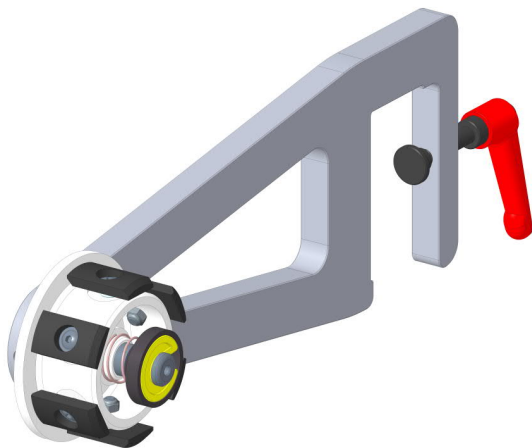
ACC unwinding position

- Unwinding speed: 20-300 m/min
- Thread tension: 200-1500 cN
- Bobbin weight: max. 40 kg
- Regulation: pneumatically, centrally adjustable
- Suitable for almost all common bobbins



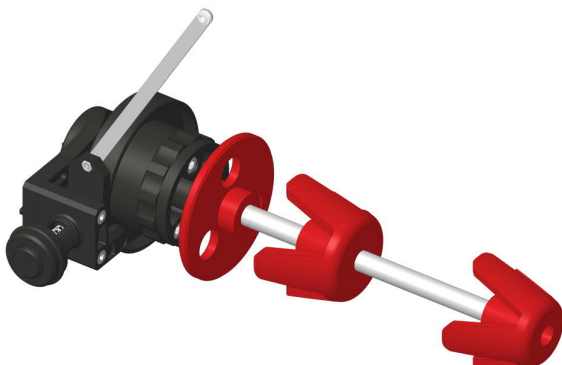
RJS unwinding position

- Unwinding speed 1-100 m/min
- Thread tension: 450-2300 cN
- Bobbin weight: max. 40 kg
- Regulation: pneumatically, centrally adjustable, automatically readjusting
- Configurable for B-80/33, B-60, B-80/17 und B-40 bobbins



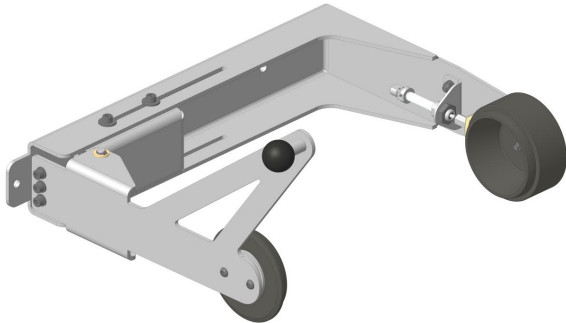
Tape unwinding position

- Unwinding speed: 1-20 m/min
- Thread tension: 50-250 cN
- Bobbin weight: max. 8 kg
- Regulation: mechanical, decentralized adjustable by changing the spring
- Can be used for tape spools with an inner diameter of 76 mm and a maximum width of 40 mm



KL unwinding position

- Unwinding speed: 1-100 m/min
- Thread tension: 40-200 cN
- Bobbin weight: max. 2 kg
- Regulation: mechanical, decentralized adjustable
- Can be used for very small spools



SA unwinding position

- Unwinding speed: 1-200 m/min
- Thread tension: 30-250 cN
- Bobbin weight: max. 20 kg
- Regulation: pneumatically, centrally adjustable
- Width adjustable for different bobbin widths and diameters