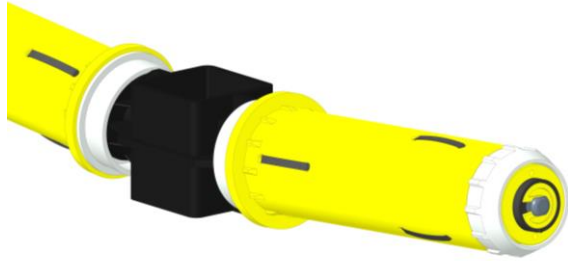


# Tangential unwinding positions



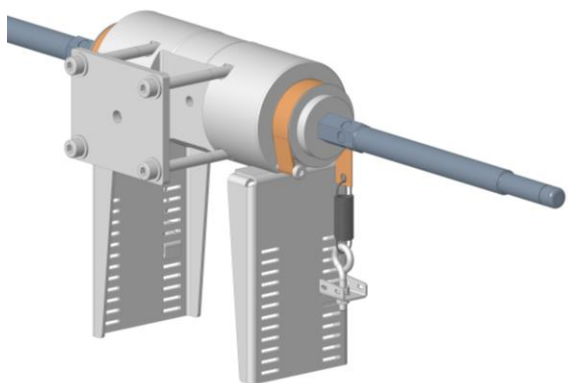
## Mechanical unwinding position

- Unwinding speed: 1-20 m/min
- Thread tension: 100-500 cN
- Bobbin weight: max. 20 kg
- Regulation: mechanical, decentralized adjustable
- Suitable for almost all common bobbins



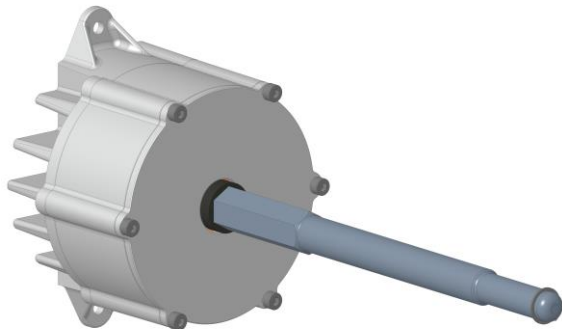
## Reverse rotation adapter

- Unwinding speed: 1-20 m/min
- Thread tension: 100-500 cN
- Bobbin weight: max. 20 kg
- Regulation: mechanical, decentralized adjustable, reverse rotation function
- Suitable for almost all common bobbins



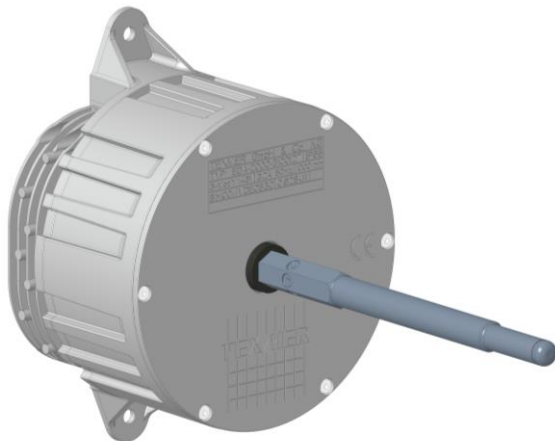
## Leather strap unwinding position

- Unwinding speed: 1-100 m/min
- Thread tension: 50-450 cN
- Bobbin weight: max. 30 kg
- Regulation: mechanical, decentralized adjustable
- Suitable for almost all common bobbins



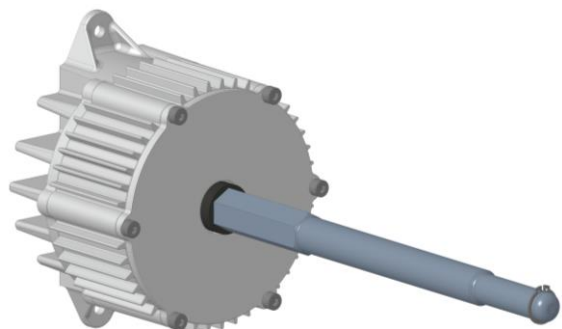
### EGA600®

- Unwinding speed: 1-250 m/min
- Thread tension: 50-600 cN
- Bobbin weight: max. 20 kg
- Regulation: electronically, centrally adjustable, automatically readjusting
- Suitable for almost all common bobbins



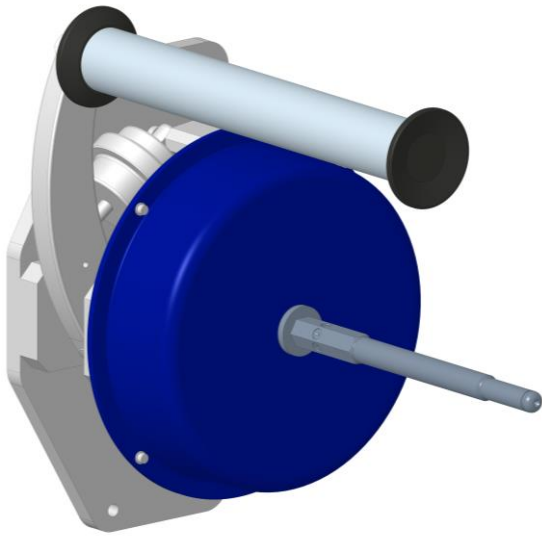
### EGA2000®

- Unwinding speed: 1-250 m/min
- Thread tension: 200-2000 cN
- Bobbin weight: max. 40 kg
- Regulation: electronically, centrally adjustable, automatically readjusting
- Suitable for almost all common bobbins



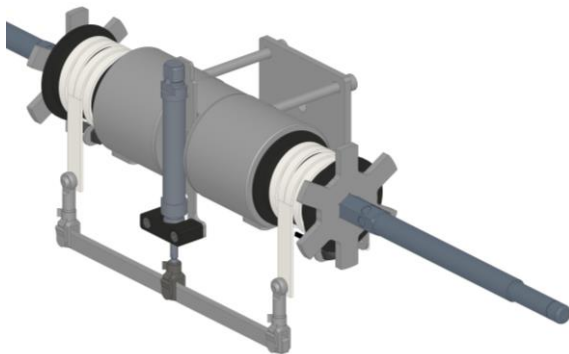
### EEA®

- Unwinding speed: 40-350 m/min
- Thread tension: 100-1000 cN
- Bobbin weight: max. 20 kg
- Regulation: electronically, centrally adjustable
- Suitable for almost all common bobbins



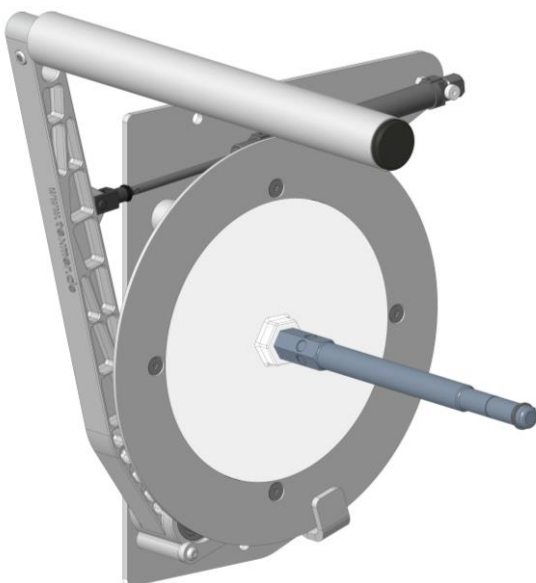
### Eddy current brake

- Unwinding speed: 8-150 m/min
- Thread tension: 450-5000 cN
- Bobbin weight: max. 40 kg
- Regulation: pneumatically, centrally adjustable
- Suitable for almost all common bobbins



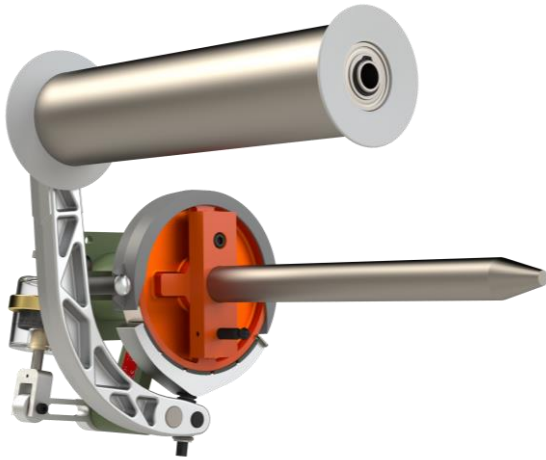
### PMR unwinding position

- Unwinding speed: 1-180 m/min
- Thread tension: 150-800 cN
- Bobbin weight: max. 40 kg
- Regulation: pneumatically, centrally adjustable, automatically readjusting
- Suitable for almost all common bobbins



### ACC unwinding position

- Unwinding speed: 20-300 m/min
- Thread tension: 200-1200 cN
- Bobbin weight: max. 40 kg
- Regulation: pneumatically, centrally adjustable
- Suitable for almost all common bobbins



## RJS unwinding position

- Unwinding speed 1-100 m/min
- Thread tension: 450-2300 cN
- Bobbin weight: max. 40 kg
- Regulation: pneumatically, centrally adjustable, automatically readjusting
- Configurable for B-80/33, B-60, B-80/17 und B-40 bobbins

Texmer is your creel specialist when it comes to unwinding technical textiles. We offer you a wide range of different solutions in the field of unwinding creels and overhead creels.

More than 40 years of experience in this field and many plants already installed in the factories of our international customers are proof of the solid quality and high efficiency of our plants.

The tension compensation system developed and patented by Texmer is virtually maintenance-free and extremely reliable. Texmer creels can be easily combined with any machine and are manufactured in the following designs: Stationary creels, mobile creels and stack creels.

We will be glad to assist you in selecting the right unwinding technology and advise you on the possibilities for manufacturing your products in the required quality without obligation. We offer creels for unrolling the fibres or for axial unwinding. Depending on the manufacturing process and the material to be processed, we offer you the right solution for your application.

Benefit from our many years of experience in the processing of different materials and their careful handling right through to the processing process. Whether mechanical, pneumatic or electronic, we will develop the right creel for your application together with you.